

# **STANDARD HORIZON**

EUROPE / ASIA PACIFIC

*Nothing takes to water like Standard Horizon*



## **MARINE COMMUNICATIONS PRODUCT CATALOGUE 2018**

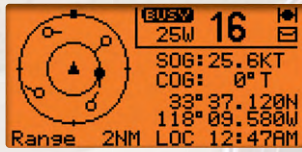


# Fixed Mount VHF Radios

POWER, PERFORMANCE, RELIABILITY

## ADVANCED FEATURES

- AIS/AIS SART target display: MMSI, Call Sign, Ship Name, BRG, DST, SOG and COG



- Integrated 66 Channel GPS antenna



- BUILT-IN AIS RECEIVER  
Integrated dual channel AIS (Automatic Identification System) receiver

- Clear Voice noise cancelling speaker microphone with channel selection and 16/9 key

- Extra-large rotary channel knob

- 80dB Commercial grade receiver

► Supplied Accessories:  
Power Cord and Mounting Bracket



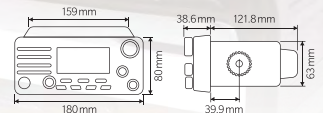
## GX2200E MATRIX AIS/GPS ITU CLASS D

FIRST FIXED MOUNT VHF WITH BUILT-IN AIS/GPS RECEIVER  
30W PA/FOG-RAM3+ COMPATIBLE

### BUILT-IN AIS

**IPX7**  
Submersible  
1m for 30min

**3 Year**  
WARRANTY



- Meets ITU-R M.493-13 Class D (Digital Selective Calling)
- Scanning and Dual Watch operation
- GPS Compass, Waypoint and GPS status pages
- DSC position request and report functions
- ATIS mode for European Inland waterways
- Supports optional RAM3+ second station remote microphone with AIS display
- Integrated dual channel AIS (Automatic Identification System) receiver

- Navigate to waypoints with Entered & Saved on the Compass page
- Navigate to the location of a DSC Distress Call using the Compass Page
- Direct calling to Class A and Class B vessels using the DSC individual call feature
- Programmable CPA (Closest Point of Approach) or TCPA (Time to Closest Point of Approach) collision avoidance alarms
- Navigation (LAT/LON, Time, SOG and COG) information is shown on display
- 4800 or 38400 NMEA 0183 baud rate selection, for plotters with 1 NMEA port
- User customisable soft keys for easy menu operation



## Icon Function List

<b>Radio Specifications</b>	FLOATING	SUBMERSIBLE	SUBMERSIBLE	6W Transmit Power	LOUD AUDIO 700mW	LOUD AUDIO	80 dB RECEIVER	LAND MOBILE CHANNELS	3.7V Battery technology	AVAILABLE IN BLACK OR WHITE	<b>3 Year</b> WARRANTY
<b>Usability</b>	E20 Easy To Operate	16/9	16/5	LARGE DISPLAY	Li-ion Battery Included	AC and DC Charger Included	USB Charger Included	CONNECTABILITY	SECOND STATION	OPTIONAL MIC/HEADSET	LOUD HAILER
<b>Features</b>	CLASS D	DSC DISTRESS and POS Polling	GM Group Monitor	GPS COMPASS	WAYPOINT NAV	GPS	AIS	(FM) Broadcast Radio Receiver	TONE CONTROL	MOB Man Overboard	STROBE LIGHT



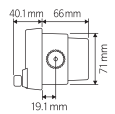
## GX1700E EXPLORER GPS ITU CLASS D

ULTRA SLIM & COMPACT REAR CASE  
FIRST FIXED MOUNT VHF WITH BUILT-IN GPS!

► Supplied Accessories: Power Cord and Mounting Bracket



- Meets ITU-R M.493-13 Class D (Digital Selective Calling)
- Ultra-slim and compact rear case design (90mm depth)
- Scanning and Dual Watch operation
- Separate receiver for CH70 built in (Receiving DSC Calls)
- ATIS mode for European Inland waterways
- Optional RAM3+ second station remote microphone is supported
- Navigation to Waypoints that are entered & saved on the Compass Page
- GPS antenna built-in (66 Channel)
- Automatically poll the GPS position of up to 4 vessels using DSC
- Navigation (LAT/LON, SOG, and COG) information shown on display
- Noise cancelling microphone with channel UP/DOWN, 16/9 and H/L keys



## GX1300E ECLIPSE ITU CLASS D

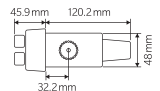
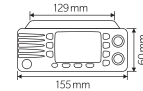
FIXED MOUNT CLASS D DSC VHF

► Supplied Accessories: Power Cord and Mounting Bracket

Body colour: ● Black ○ White Available in Black and White



- Meets ITU-R M.493-13 Class D (Digital Selective Calling)
- Affordable Ultra Compact Fixed Mount VHF radio
- Scanning operation and Multi-Watch (Dual Watch and Triple Watch)
- Separate receiver for CH70 built in (Receiving DSC Calls)
- ATIS mode for European Inland waterways
- Automatically poll the GPS position of up to 6 vessels using DSC\*1
- GPS position and Time are shown on a full dot matrix display (Requires GPS Receiver connection)
- DSC Distress, Individual, Group, All Ships, Position Request, Position Report, and DSC Test Calling\*1
- Large-size dot matrix display (31mm x 55mm)



\*1 when connected to an optional GPS



### Fixed Mount VHF Radio Accessories

Model	Microphone / Cable	External GPS Antenna	Encryption	Cover	External Speaker	Hail / PA Speaker	Bracket
	<b>CMP31B / CMP31W</b> Remote station microphone (Black/White) RAM3+	<b>CT-100</b> 7m extension cable for CMP31	<b>SCU-31</b> External GPS antenna with 15m of cable	<b>CVS2500A</b> Voice scrambler	Dust Cover	<b>MLS-300</b> External Speaker	<b>MLS-310</b> External Speaker with 10W amplifier
	<b>220SW</b> 114mm Round PA/hailing horn 30W 4 Ohm	<b>240SW</b> 127mm x 203mm Rectangular PA/hailing horn 40W 4 Ohm					Flush mount bracket
GX2200E	•	•	•	HC2000	•	•	MMB-84
GX1700E	•	•	•	HC1600	•	•	MMB-97
GX1300E	•	•	•	HC1100	•	•	MMB-84

# Floating Handheld VHF Radios

LEADING THE INDUSTRY WITH THE FIRST FLOATING VHF WITH GPS & DSC

## ADVANCED FEATURES

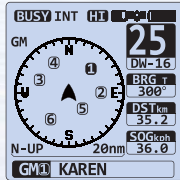
- Integrated 66 Channel WAAS GPS antenna and GPS memory log



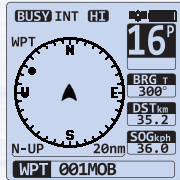
- Oversized full dot matrix display (43.2mm x 43.2mm) (58.4mm diagonal)



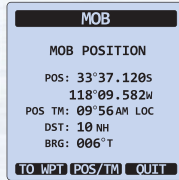
MENU SCREEN



GROUP MONITOR SCREEN



MOB WAYPOINT SCREEN



MOB SCREEN

- Noise cancelling function for transmit and receive audio
- USB Data Port - NMEA 0183 sentence output: DSC, DSE, GLL, RMC, GSA, GSV and GGA (9600 baud), and download GPS logged Data
- Water Activated Emergency Strobe Light
- Supplied with a 7.4V 1800mAh Li-Ion battery

► Supplied Accessories:

CAT460 Antenna, SBR-13LI 7.4V 1800mAh Li-Ion Battery Pack, SBH-12 Charger Cradle, SAD-11 AC Adapter, E-DC-19A DC Cable with Cigarette Lighter Plug, SBT-13 Alkaline Battery Case, Clip-22 Belt Clip, YS-05-01 Hand Strap and T9101606 USB Cable

Overall Dimensions: 62mm x 138mm x 43mm Weight: 322g (with: SBR-13LI, Hand Strap, Belt Clip & Antenna)



## HX870E ITU CLASS D

FLOATING CLASS D HANDHELD VHF WITH GPS

- Floating
- 6W (5W)\*1 transmit power output (Selectable 6 (5)/2/1W)
- 700mW Loud Audio Output
- Preset key used to recall up to 10 favourite channels
- Easy to Operate Menu System
- Scanning operation and Multi-Watch (Dual Watch and Triple Watch)
- CH16/S Quick Access (S: Sub-channel)
- Supplied with 7.4V 1800mAh Li-Ion battery
- ATIS mode for European Inland waterways



- Meets ITU-R M.493-13 Class D DSC (Digital Selective Calling)
- Built in dedicated channel 70 receiver for Class D DSC
- Navigate to the location of a DSC Distress Call using the Compass Page
- GM (Group Monitor) using DSC Group Position Calling
- DSC Test Calling and Auto DSC Channel Change Selection
- Automatically poll the GPS positions of vessels using DSC
- Navigation to Waypoints that are entered & saved on the Compass Page
- MOB (Man Overboard) GPS Location Function
- Navigation (LAT/LON, SOG, and COG) information shown on display

\*1 5W TX power required in some countries



## Handheld VHF Radio Accessories

Model	Antenna / Adapter		Battery		Battery Charger			
	CAT460 VHF Marine Antenna	CN-3 BNC-SMA Adapter	Rechargeable	Alkaline Battery tray	Cradle	AC Adapter	DC Cable (with Cigarette Lighter Plug)	SDD-14 USB DC Charger with Cigarette Lighter Plug
HX870E	•*2	•	SBR-13LI 1800mAh Li-Ion*2	SBT-13 (5 x AAA)*2	SBH-12*2	SAD-11C/U/H*2,3	E-DC-19A*2	
HX40E	•*2	•	1850mAh (Dealer replaceable)		SBH-27*2	SAD-23C/U*2,3, SAD-11H*2,3	E-DC-19A*2	
HX210E	•*2	•	1850mAh (Dealer replaceable)		SBH-25*2	SAD-23C/U*2,3, SAD-11H*2,3	E-DC-19A*2	
HX300E	•*2	•	SBR-27LI 1800mAh Li-Ion*2	FBA-44 (3 x AAA)		SAD-17C/U/H*2,3		



**NEW** for 2018 **HX40E**

**IPX7** Submersible 1m for 30min

**FLOATING** \*4

**3 Year WARRANTY**

\*4 When fitted into optional flotation case

**ULTRA COMPACT HANDHELD VHF**

► **Supplied Accessories:**

CAT460 Antenna, SBH-27 Charger Cradle, SAD-23 or SAD-11 AC Adapter, E-DC-19A DC Cable with Cigarette Lighter Plug, SHB-19 Belt Clip and Hand Strap

Overall Dimensions: 52mm × 95mm × 33mm Weight: 230g (with: Hand Strap, Belt Clip & Antenna)

- Floating (When fitted into optional flotation case)
- Ultra Compact case design: 52mm × 95mm × 33mm
- 6W (5W)\*1 transmit power output (Selectable 6 (5)/2.5/1W)
- 600mW Loud Audio Output
- Preset key used to recall up to 10 Favourite channels
- Easy to Operate Menu System
- Scanning operation and Multi-Watch (Dual Watch and Triple Watch)
- CH16/S Quick Access (S: Sub-channel)
- Built-in Lithium Polymer Battery Pack (7.4V, 1850mAh)
- ATIS mode for European Inland waterways
- FM Broadcast Radio Receiver

\*1 5W TX power required in some countries



**HX210E**

**IPX7** Submersible 1m for 30min

**FLOATING**

**3 Year WARRANTY**

**COMPACT FLOATING HANDHELD VHF**

► **Supplied Accessories:**

CAT460 Antenna, SBH-25 Charger Cradle, SAD-23 or SAD-11 AC Adapter, E-DC-19A DC Cable with Cigarette Lighter Plug, CLIP-22 Belt Clip and Hand Strap

Overall Dimensions: 60mm × 132mm × 40mm Weight: 280g (with: Hand Strap, Belt Clip & Antenna)

- Floating
- Compact case design: 60mm × 132mm × 40mm
- 6W (5W)\*1 transmit power output (Selectable 6 (5)/2.5/1W)
- 600mW Loud Audio Output
- Preset key used to recall up to 10 Favourite channels
- Easy to Operate Menu System
- Scanning operation and Multi-Watch (Dual Watch and Triple Watch)
- CH16/S Quick Access (S: Sub-channel)
- Built-in Lithium Polymer Battery Pack (7.4V, 1850mAh)
- ATIS mode for European Inland waterways
- FM Broadcast Radio Receiver
- Water activated strobe light

\*1 5W TX power required in some countries



**HX300E**

**IPX8** Submersible 1.5m for 30min

**FLOATING**

**3 Year WARRANTY**

**COMPACT FLOATING HANDHELD VHF**

► **Supplied Accessories:**

CAT460 Antenna, SBR-27LI 3.7V 1800mAh Li-Ion Battery Pack, SAD-17 AC Adapter, CLIP-22 Belt Clip, Hand Strap and T9101606 USB Cable

Overall Dimensions: 59mm × 128mm × 33mm Weight: 240g (with: SBR-27LI, Belt Clip & Antenna)

- Floating
- Compact case design 59mm × 128mm × 33mm
- Selectable 5 and 1 Watt transmit power output
- 600mW Loud Audio Output
- Preset key used to recall up to 10 Favourite channels
- Easy to Operate Menu System
- Scanning operation and Multi-Watch (Dual Watch and Triple Watch)
- CH16/9 Quick Access
- Supplied with 3.7V 1800mAh Li-Ion battery
- ATIS mode for European Inland waterways
- USB charging system
- Water activated light


Model	Belt clip / Case / Hanger			Speaker Microphone / Vox Headset / Earpiece Microphone						
	SHC-29 Flotation case for HX40	SCH-11 Belt Clip Hanger		SSM-14A Submersible speaker microphone with earphone jack	MH-57A4B Speaker microphone	MH-73A4B Submersible speaker microphone	CMP460 Submersible speaker microphone	SEP-10A Earphone for SSM-14A	SSM-64A Vox Headset	SSM-55A Earpiece/microphone
HX870E										
HX40E	•									
HX210E										
HX300E										

\*2 The same as the supplied accessory \*3 Depending on the radio version

# Commercial Grade Marine VHF

BUILT BY PROFESSIONALS FOR PROFESSIONALS

## ADVANCED FEATURES

- Integrated AIS (Automatic Identification System) Class B Transponder (GX6500E only)
- Capable of connecting two optional wired RAM4 or one wired RAM4 and four wireless RAM4W\*1 microphones
- Integrated NMEA 2000 interface supporting all PGNs for Navigation, GPS, AIS and DSC functions
- Integrated Dual Channel AIS Receiver
- 66 Channel External GPS antenna included (GX6500E only) 
- GPS Compass, Waypoint and GPS status pages
- Dual Zone 25W PA/Loud Hailer with preprogrammed fog signals and listen back
- Submersible IPX8 (1.5 meters for 30 minutes)
- Integrated 32 Code Voice Scrambler and 4 Code Voice Scrambler

► Supplied Accessories:

Hand Microphone, Power Cord, Mounting Bracket and Hardware, External GPS Antenna SCU-31\*2, USB Cable

\*1 Requires Optional Wireless Access Point SCU-30  
\*2 GX6500E only



<Optional Accessories>



Wireless Remote Access Microphone (SSM-71H RAM4W)\*1



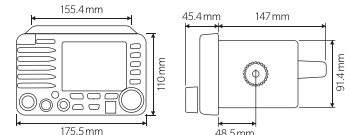
Wireless Access point (SCU-30)

Fixed Mount VHF Radio

**NEW for 2018** **GX6500E** QUANTUM Class B AIS/GPS *ITU CLASS D*  
**GX6000E** QUANTUM AIS *ITU CLASS D*

FIXED MOUNT VHF WITH NMEA 2000 AND INTEGRATED CLASS B AIS TRANSPONDER BUILT-IN \*2

- Integrated dual channel AIS (Automatic Identification System) receiver
- Integrated Class B AIS transponder\*2
- AIS/AIS SART target display: MMSI, Call Sign, Ship Name, BRG, DST, SOG and COG
- Meets ITU-R M493-13 Class D DSC (Digital Selective Calling)
- NMEA 2000 and NMEA 0183 compatible
- 66 Channel External GPS antenna included\*2
- Selectable 4800 or 38400 baud rate for plotters
- GPS Compass, Waypoint and GPS status pages
- Programmable CPA or TCPA collision avoidance alarms
- Dual Zone 25W PA/Loud Hailer with preprogrammed fog signals and listen back
- Submersible IPX8 (1.5 meters for 30 minutes)
- 80dB Commercial grade receiver
- Noise cancelling for both transmit and receive audio



- Front panel microphone can be connected to rear panel and extended 6m using MEK-4 mic extension kit
- Integrated Voice Recorder to playback up to two minutes of RX (receive) audio
- Integrated 32 Code Voice Scrambler compatible with FVP-42 and 4 Code Voice Scrambler compatible with CVS2500A
- Easy to Operate menu system
- User customisable soft keys for easy menu operation
- Capable of connecting two optional wired RAM4 or one wired RAM4 and four wireless RAM4W\*1 microphones
- Contact Class A and Class B AIS vessels using the DSC individual call
- GM (Group Monitor) using DSC Group Position Call
- Navigate to the location of a DSC Distress Call using the Compass Page
- MOB (Man Overboard) GPS Location Function

\*1 Requires Optional Wireless Access Point SCU-30  
\*2 GX6500E only



Loud Hailer

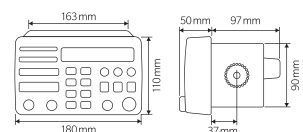
**VLH-3000A** **IPX7** Submersible 1m for 30min **3 Year WARRANTY**

30W DUAL ZONE LOUD HAILER

► Supplied Accessories: Mounting Bracket, Power Cord and Dust Cover

- PA/Hailer 30W output with Listen Back
- Dual Zone - Forward, Aft or Both
- 6 Preprogrammed Fog Signals: Underway, Stop, Sail, Tow, Anchor and Aground
- Horn and Siren
- Noise cancelling microphone
- Easy push button control

- 2W Loud internal speaker audio Output
- Compatible with optional MLS-300i intercom speaker with IC1 and IC2 Push-to-Alert Button
- Compatible with MLS-300 and MLS-310 (10W amplified) external speakers
- Adjustable Backlight





# HX400E

**IPX8**  
Submersible  
1.5m for 30min

**3 Year**  
WARRANTY

## COMMERCIAL GRADE VHF WITH LMR CHANNELS

### ► Supplied Accessories (HX400E/HX400IS):

CAT460 Antenna, FNB-115LI (HX400E) 7.4V 2300mAh/SBR-29LIIS (HX400IS) 7.4V 2550mAh Li-Ion Battery Pack, CD-50 Charger Cradle, PA-45 AC Adapter, CLIP-22 Belt Clip and Hand Strap

Overall Dimensions (HX400E/HX400IS): 57mm x 133mm x 40mm  
Weight: 350g (with: FNB-115LI (HX400E)/SBR-29LIIS (HX400IS), Belt Clip & Antenna)

- Selectable 5 and 1 Watt transmit power output
- Marine VHF with 40 Programmable Land Mobile Channels 134MHz to 174MHz
- 700mW Loud Audio Output
- Supplied with 7.4V 2300mAh Li-Ion battery
- Built-in Noise cancelling microphone
- Voice Scrambler
- Scanning operation and Multi-Watch (Dual Watch or Triple Watch)

# HX400IS

**IPX8**  
Submersible  
1.5m for 30min

**3 Year**  
WARRANTY

(Non-CE version)

## INTRINSICALLY SAFE

In addition to the HX400E specification, the HX400IS also has the following features:

- Certified Intrinsically Safe
- Supplied with Intrinsically safe 7.4V 2550mAh Li-Ion battery

### INTRINSICALLY SAFE INFORMATION:

The HX400IS, SBR-29LIIS Li-Ion battery pack and optional SSM-14A and CMP460 speaker microphones meet the ANSI/UL 913-5th Ed. Requirements for: Class I: Flammable Gases, Vapors, or Liquids Div. 1 Group C (Ethylene) Group D (Propane) Class II: Combustible Dusts Div. 1 Group E (Metals) Group F (Coal) Group G (Grain) Class III: Ignitable Fibers and Filings



# HX407E On-board

**IPX8**  
Submersible  
1.5m for 30min

**3 Year**  
WARRANTY

## COMMERCIAL GRADE UHF ON-BOARD RADIO

### ► Supplied Accessories:

SRA-14 Antenna, FNB-115LI (HX407E On-board) 7.4V 2300mAh/SBR-30LI ATEX (HX407E ATEX) 7.4V 2550mAh Li-Ion Battery Pack, CD-50 Charger Cradle, PA-45 AC Adapter, CLIP-22 Belt Clip and Hand Strap

Overall Dimensions: 57mm x 133mm x 40mm  
Weight: 350g (with: FNB-115LI (HX407E On-board)/SBR-30LI ATEX (HX407E ATEX), Belt Clip & Antenna)

- Selectable 1.5 and 0.5 Watt transmit power output
- 32 Programmable Marine UHF Channels
- 700mW Loud Audio Output
- Supplied with 7.4V 2300mAh Li-Ion battery
- Noise cancelling function for transmit and receive audio
- Voice Scrambler
- Scanning operation and Dual Watch

# NEW for 2018 HX407E ATEX

**IPX8**  
Submersible  
1.5m for 30min

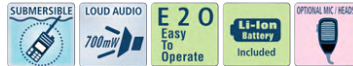
**3 Year**  
WARRANTY

## INTRINSICALLY SAFE

In addition to the HX407E On-board specification, the HX407E ATEX also has the following features:

- Certified ATEX Intrinsically Safe
- Selectable 1.5 and 0.5 Watt transmit power output
- Supplied with Intrinsically safe 7.4V 2550mAh Li-Ion battery

ATEX Intrinsically Safe Approval classes: IIG Ex ib IIA T3



# HX380

**IPX7**  
Submersible  
1m for 30min

**3 Year**  
WARRANTY

(Non-CE version)

## COMMERCIAL VHF WITH LMR CHANNELS

### ► Supplied Accessories:

CAT460 Antenna, FNB-V105LI 7.4V 1600mAh Li-Ion Battery Pack, CD-48 Charger Cradle, PA-48 AC Adapter and CLIP-920 Belt Clip

Overall Dimensions: 57mm x 133mm x 33mm  
Weight: 320g (with: FNB-V105LI, Belt Clip & Antenna)

- Selectable 5 and 1 Watt transmit power output
- Marine VHF with 40 Programmable Land Mobile Channels 134MHz to 174MHz
- 700mW Loud Audio Output
- Supplied with 7.4V 1600mAh Li-Ion battery
- Scanning operation and Dual Watch



## Fixed Mount VHF Radio and Loud Hailer Accessories

Model	Microphone / Cable				Access Point / GPS Antenna		
		<b>SSM-70H</b> Remote Access Microphone RAM4	<b>SSM-71H</b> Wireless Remote Access Microphone RAM4W*3	<b>SDD-14</b> USB DC Charger with Cigarette Lighter Plug for SSM-71H	<b>CT-100</b> 7m extension cable for SSM-70H	<b>MEK-4</b> Microphone Extension Kit (6m)	<b>SCU-30</b> Wireless Access Point for SSM-71H (RAM4W)
GX6500E / GX6000E VLH-3000A	•	•	•	•	•	•	• <sup>4</sup>
Model	Bracket		External Speaker		Hail / PA Speaker		
	<b>MMB-84</b> Flush Mount Bracket	<b>MLS-300</b> External Speaker	<b>MLS-310</b> External Speaker with 10W amplifier	<b>MLS-300i</b> Loud Hailer Intercom Speaker (with CALL button)	<b>220SW</b> 114mm Round PA/hailing horn 30W 4 Ohm	<b>240SW</b> 127mm x 203mm Rectangular PA/hailing horn 40W 4 Ohm	
GX6500E / GX6000E VLH-3000A	•	•	•	•	•	•	

## Handheld VHF/UHF Radio Accessories

Model	Antenna / Adapter			Battery		Battery Charger		Case	
		<b>CAT460</b> VHF Marine Antenna	<b>SRA-14G/H/J</b> <sup>7</sup> UHF Marine Antenna	<b>CN-3</b> BNC-SMA Adapter	<b>Rechargeable</b>	<b>Alkaline Battery tray</b>	<b>Cradle</b>		<b>AC Adapter</b>
HX400E	• <sup>6</sup>		•	FNB-115LI 2300mAh Li-Ion <sup>6</sup> SBR-29LIIS <sup>5,6</sup>	FBA-42 (6 x AA)	CD-50 <sup>6</sup>	PA-45C/U <sup>6,8</sup>	•	
HX400IS	• <sup>6</sup>		•	Intrinsically Safe 2550mAh Li-Ion	FBA-42 (6 x AA)	CD-50 <sup>6</sup>	PA-45C/U <sup>6,8</sup>	•	
HX407E On-board		• <sup>6</sup>	•	FNB-115LI 2300mAh Li-Ion <sup>6</sup> SBR-30LI ATEX <sup>5,6</sup>	FBA-42 (6 x AA)	CD-50 <sup>6</sup>	PA-45C/U <sup>6,8</sup>	•	
HX407E ATEX		• <sup>6</sup>	•	Intrinsically Safe 2550mAh Li-Ion	FBA-40 (6 x AA)	CD-50 <sup>6</sup>	PA-45C/U <sup>6,8</sup>	•	
HX380	• <sup>6</sup>		•	FNB-V105LI 1600mAh Li-Ion <sup>6</sup>	FBA-40 (6 x AA)	CD-48 <sup>6</sup>	PA-48C/U <sup>6,8</sup>	•	
Model	Speaker Microphone / Vox Headset / Earpiece Microphone						Belt clip / Hanger		
	<b>SSM-14A</b> Submersible speaker microphone with earphone jack <sup>5</sup>	<b>MH-57A4B</b> Speaker microphone	<b>MH-73A4B</b> Submersible speaker microphone	<b>CMP460</b> Submersible speaker microphone	<b>SEP-10A</b> Earphone for SSM-14A	<b>SSM-55A</b> Earpiece / microphone	<b>SSM-64A</b> Vox Headset	<b>SCH-11</b> Belt Clip Hanger	<b>SHC-18</b> Leather Case w / belt loop and shoulder strap
HX400E	•	•	•	•	•	•	•	•	•
HX400IS	•	•	•	•	•	•	•	•	•
HX407E On-board	•	•	•	•	•	•	•	•	•
HX407E ATEX	•	•	•	•	•	•	•	•	•
HX380	•	•	•	•	•	•	•	•	•

<sup>3</sup> Requires Optional Wireless Access Point SCU-30 <sup>4</sup> The same as the supplied accessory for GX6500E <sup>5</sup> Intrinsically Safe Version <sup>6</sup> The same as the supplied accessory <sup>7</sup> G for 400-430MHz / H for 420-450MHz / J for 440-470MHz <sup>8</sup> Depending on the radio version  
Standard Horizon reserves the right to make changes and enhancements to products at our discretion. Current specifications are therefore subject to change without notice.

# FIXED MOUNT VHF AND LOUD HAILER SPECIFICATIONS

## Fixed Mount VHF Radios

MODEL	GX6500E/GX6000E	GX2200E	GX1700E	GX1300E
<b>GENERAL</b>				
Frequency Range	Marine Band 156.025 - 163.275 MHz	Marine Band 156.025 - 163.275 MHz	Marine Band 156.025 - 163.275 MHz	Marine Band 156.025 - 163.275 MHz
Input Voltage	13.8 VDC ±20%	13.8 VDC ±20%	13.8 VDC ±20%	13.8 VDC ±20%
Current Drain	Standby: 0.55 A Receiver: 0.9 A Transmit: 5.0 A (Hi), 1.0 A (Lo)	Standby: 0.55 A Receiver: 0.9 A Transmit: 5.0 A (Hi), 1.0 A (Lo)	Standby: 0.45 A Receiver: 0.8 A Transmit: 5.0 A (Hi), 1.0 A (Lo)	Standby: 0.3 A Receiver: 1.0 A Transmit: 5.5 A (Hi), 1.5 A (Lo)
Overall Dimensions	175.5W × 110H × 173.3D mm	180W × 80H × 160D mm	150W × 85H × 90D mm	155W × 60H × 150D mm
Flush-Mount Dimensions	158W × 94H × 158D mm	161W × 65H × 150D mm	137W × 72H × 90D mm	131W × 51H × 140D mm
Weight	1.66 kg	1.45 kg	900 g	870 g
PA/FOG Power Output	25 W with listen back	30 W with listen back	-	-
<b>TRANSMITTER</b>				
RF Output	25 W (Hi), 1 W (Lo)	25 W (Hi), 1 W (Lo)	25 W (Hi), 1 W (Lo)	25 W (Hi), 1 W (Lo)
Conducted Spurious Emissions	Less than -80 dBc (Hi), -66 dBc (Lo)	Less than -80 dBc (Hi), -66 dBc (Lo)	Less than -80 dBc (Hi), -66 dBc (Lo)	Less than -80 dBc (Hi), -66 dBc (Lo)
Frequency Stability	±3 ppm (-20° C to +60° C)	±3 ppm (-20° C to +60° C)	±3 ppm (-20° C to +60° C)	±3 ppm (-20° C to +60° C)
FM Hum and Noise	50 dB	50 dB	50 dB	50 dB
<b>RECEIVER (for Voice and DSC)</b>				
Sensitivity (12 dB SINAD)	0.30 µV	0.30 µV	0.25 µV	0.25 µV
Spurious and Image Rejection	80 dB for Voice (75 dB for DSC / 70 dB for AIS)	80 dB for Voice (75 dB for DSC)	80 dB for Voice (75 dB for DSC)	75 dB
Intermodulation and Rejection	80 dB for Voice (75 dB for DSC / 70 dB for AIS)	80 dB for Voice (75 dB for DSC)	70 dB for Voice (70 dB for DSC)	70 dB for Voice (70 dB for DSC)
Audio Output	10 W	4.5 W	4.5 W	4.5 W
DSC Format	Class D ITU-R.M.493-13	Class D ITU-R.M.493-13	Class D ITU-R.M.493-13	Class D ITU-R.M.493-13
TRANSMITTER (for AIS)	161.975 MHz (AIS CH A)*1 162.025 MHz (AIS CH B)*1	-	-	-
<b>RECEIVER (for AIS)</b>				
Sensitivity	0.5 µV*1	0.5 µV	-	-
Selectivity	Spurious and Image Rejection 70 dB*1 Intermodulation and Rejection 70 dB*1	Spurious and Image Rejection 70 dB Intermodulation and Rejection 70 dB	-	-
<b>NMEA Input/Output</b>				
NMEA 2000	Compatible	-	-	-
NMEA 0183	Input: GLL, GGA, GNS, RMC, GSA*1 and GSV*1 (4800 or 38400*1 bps) Output: DSC, DSE, GGA, GLL, GNS, RMC, GSA and GSV (4800 or 38400 bps), VDM and VDO (38400 bps)	Input: GLL, GGA, GNS, RMC, GSA and GSV (4800 or 38400 bps) Output: DSC, DSE (4800 or 38400 bps)	Input: GSA, GSV, GGA, GLL, GNS and RMC Output: DSC and DSE	Input: GSA, GSV, GGA, GLL, GNS and RMC Output: DSC and DSE
NMEA 0183-HS	Output: VDM and VDO (38400 bps)	Output: VDM (38400 bps)	-	-

\*1 GX6500E only

## Loud Hailer

MODEL	VLH-3000A
<b>GENERAL</b>	
Input Voltage	13.8 VDC ± 20%
PA Horn Output	30W : 2ch (at 4 ohm 10 % distortion)
Intercom Output	4W : 2ch (at 4 ohm 10 % distortion)
Listen-Back Input Level	2 mV
AF Output	4W (at 4 ohm 10 % distortion)
EXT SPK Output	4W (at 4 ohm 10 % distortion)
INT SPK Output	2W (at 8 ohm 10 % distortion)
Mic sensitivity	10 mV
Drain current	7 A (MAX) when Forward and Aft Horns are used.
Idle current	300 mA
Operating temperature	-20° C to +55° C
Storage temperature	-20° C to +70° C
Water integrity performance	IPX7 (1 m for 30 min) for the front panel
Overall Dimensions	180W × 110H × 140D mm
Flush mount dimensions	165W × 92H × 115D mm
Weight	1.35 kg

MODEL	GX6500E/GX2200E/GX1700E GPS Specifications
Channels	66 channels
Sensitivity	Less than -147 dBm
Time to First Fix	1 min typical (@Cold Start) 5 sec typical (@Warm Start)
Geodetic Datum	WGS84
SBAS Correction	WAAS, MSAS and EGNOS

# HANDHELD VHF SPECIFICATIONS

MODEL	HX870E	HX40E	HX210E	HX300E	HX400E/HX400IS	HX407E On-board/HX407E ATEX	HX380	
<b>GENERAL</b>								
Frequency Range	Marine Band 156.025 - 163.275 MHz	Marine Band 156.025 - 163.275 MHz	Marine Band 156.025 - 163.275 MHz	Marine Band 156.025 - 163.275 MHz	Marine Band: 156.025 - 162.000 MHz LMR Band: 134 - 174 MHz	Marine Band: 457.525 - 467.575 MHz Li-Ion 2300 mAh (HX400E on-board)/ 2550 mAh (HX407E ATEX)	Marine Band: 156.025 - 163.275 MHz LMR Band: 134 - 174 MHz	
Battery type / Capacity	Li-Ion 1800 mAh	Lithium Polymer 1850 mAh (Built-in)	Lithium Polymer 1850 mAh (Built-in)	Li-Ion 1560 mAh	Li-Ion 2300 mAh (HX400E on-board)/ 2550 mAh (HX407E ATEX)	Li-Ion 2300 mAh (HX400E on-board)/ 2550 mAh (HX407E ATEX)	Li-Ion 1600 mAh	
Input Voltage	7.4 VDC	7.4 VDC	7.4 VDC	3.7 VDC	7.4 VDC	7.4 VDC	7.4 VDC	
Current Drain	Standby: 100 mA (GPS On), 60 mA (GPS Off) Receive: 330 mA (MAX AF Output) Transmit: 1.6 A / 1.0 A / 0.7 A (6W(5W)*2/2.5W/1W)	Standby: 100 mA Receive: 330 mA (MAX AF Output) Transmit: 1.6 A / 1.0 A / 0.7 A (6W(5W)*2/2.5W/1W)	Standby: 60 mA Receive: 330 mA (MAX AF Output) Transmit: 1.6 A / 1.0 A / 0.7 A (6W(5W)*2/2.5W/1W)	Standby: 20 mA Receive: 330 mA (Typical at MAX AF Output) Transmit: 2.3 A / 0.9 A (5 W / 1 W)	Standby: 50 mA Receive: 320 mA (MAX AF Output) Transmit: 1.6 A / 0.8 A (5 W / 1 W)	Standby: 70 mA Receive: 320 mA (MAX AF Output) Transmit: 0.8 A / 0.5 A (Hi / Lo)	Standby: 70 mA Receive: 320 mA (MAX AF Output) Transmit: 0.8 A / 0.5 A (Hi / Lo)	Standby: 50 mA Receive: 320 mA (MAX AF Output) Transmit: 1.6 A / 0.8 A (5 W / 1 W)
Overall Dimensions	62W × 138H × 43D mm	52W × 95H × 33D mm	60W × 132H × 40D mm	59W × 128H × 33D mm	57W × 133H × 40D mm	57W × 133H × 40D mm	57W × 133H × 33D mm	
Weight	322 g (w/SBR-13LI, Hand Strap, Belt Clip & Antenna)	230 g (w/Hand Strap, Belt Clip & Antenna)	280 g (w/Hand Strap, Belt Clip & Antenna)	240 g (w/SBR-27LI, Belt Clip & Antenna)	350 g (w/FNB-115LI/SBR-29LIIS, Belt Clip & Antenna)	350 g (w/FNB-115LI/SBR-30LI ATEX, Belt Clip & Antenna)	320 g (w/FNB-V105LI, Belt Clip & Antenna)	
<b>TRANSMITTER</b>								
RF Output	6 W (5 W)*2 / 2 W / 1 W (@7.4 V)	6 W (5 W)*2 / 2.5 W / 1 W (@7.4 V)	6 W (5 W)*2 / 2.5 W / 1 W (@7.4 V)	5 W / 1 W (@3.7 V)	5 W / 1 W (@7.4 V)	1.5 W / 0.5 W (@7.4 V)	5 W / 1 W (@7.4 V)	
Conducted Spurious Emissions	-75 dBc Typical	Less than 0.25 µV	Less than 0.25 µV	-75 dBc Typical	-75 dBc Typical	-75 dBc Typical	At least 36 dBm below	
Frequency Stability	±3 ppm (-20° C to +60° C)	±3 ppm (-20° C to +60° C)	±3 ppm (-20° C to +60° C)	±5 ppm (-20° C to +60° C)	±5 ppm (-20° C to +60° C)	±2.5 ppm (-30° C to +60° C)	±2.5 ppm (-30° C to +60° C)	
FM Hum and Noise	40 dB	40 dB	40 dB	40 dB	40 dB	40 dB	40 dB	
<b>RECEIVER</b>								
Sensitivity (12 dB SINAD)	0.25 µV	0.25 µV	0.25 µV	0.25 µV	0.25 µV	0.25 µV	0.25 µV	
Selectivity	12 kHz / 25 kHz (-6 dB / -60 dB)	12 kHz / 25 kHz (-6 dB / -60 dB)	12 kHz / 25 kHz (-6 dB / -60 dB)	25 kHz (-70 dB)	12 kHz / 25 kHz (-6 dB / -60 dB)	12 kHz / 25 kHz (-6 dB / -60 dB)	12 kHz / 25 kHz (-6 dB / -60 dB)	
Audio Output	700 mW	600 mW	600 mW	600 mW	700 mW	700 mW	700 mW	
DSC Format	Class D ITU-R.M.493-13	-	-	-	-	-	-	
NMEA 0183 In / Out	Input/Output: DSC, DSE, GGA, GLL, RMC, GSA and GSV	-	-	-	-	-	-	
<b>GPS</b>								
Channels	66 channels	-	-	-	-	-	-	
Sensitivity	Less than -147 dBm	-	-	-	-	-	-	
Time to First Fix	1 min Typical (@Cold Start) 5 sec Typical (@Warm Start)	-	-	-	-	-	-	
Geodetic Datum	WGS84	-	-	-	-	-	-	
SBAS Correction	WAAS, MSAS and EGNOS	-	-	-	-	-	-	

\*2 5 W TX power required in some countries

# STANDARD HORIZON

Standard Horizon reserves the right to make changes and enhancements to products at our discretion. Current specifications are therefore subject to change without notice.

**YAESU MUSEN CO., LTD.** <http://www.yaesu.com/jp>

Tennozu Parkside Building  
2-5-8 Higashi-Shinagawa, Shinagawa-ku, Tokyo 140-0002, Japan

**YAESU USA** <http://www.yaesu.com>

**US Headquarters** 6125 Phyllis Drive, Cypress, CA 90630, U.S.A.

**YAESU UK** <http://www.yaesu.co.uk>

Unit 12, Sun Valley Business Park, Winnall Close  
Winchester, Hampshire, SO23 0LB, U.K.

